











SWCHP203609



ZHABC-F030SD

Model No. **HABC-F030SD** Serial No. **WCHP203609**

Factory Charge: 4 lbs 12 oz R22

*TOTAL CHARGE lbs oz R22

Design Press. High Side - 350 PSIG
Low Side - 300 PSIG

*INSTALLER: Mark per Installation Instructions

For Outdoor Use Only

Unit Supply 208-230V 1PH 60HZ
Compressor 208-230V 1PH 60 Hz 13.5 RLA 75 LRA
Fan Motor 208-230V 1PH 60HZ .5 FLA 1/12 HP

Minimum Circuit Ampacity - 17.4
MAX FUSE OR MAX CKT. BKR. (HACR TYPE per NEC) - 30
R-102 073-19600-116



UL File SA3483
Listed 612T
Air Conditioner
Cooling



www.buildingcenter.org









































SIEMENS

POLE
HOUSE
LIGHT

4
DANGER
ELECTRICITY



Worksheet with columns for equipment identification and status.

Equipment	Serial	Date	Status

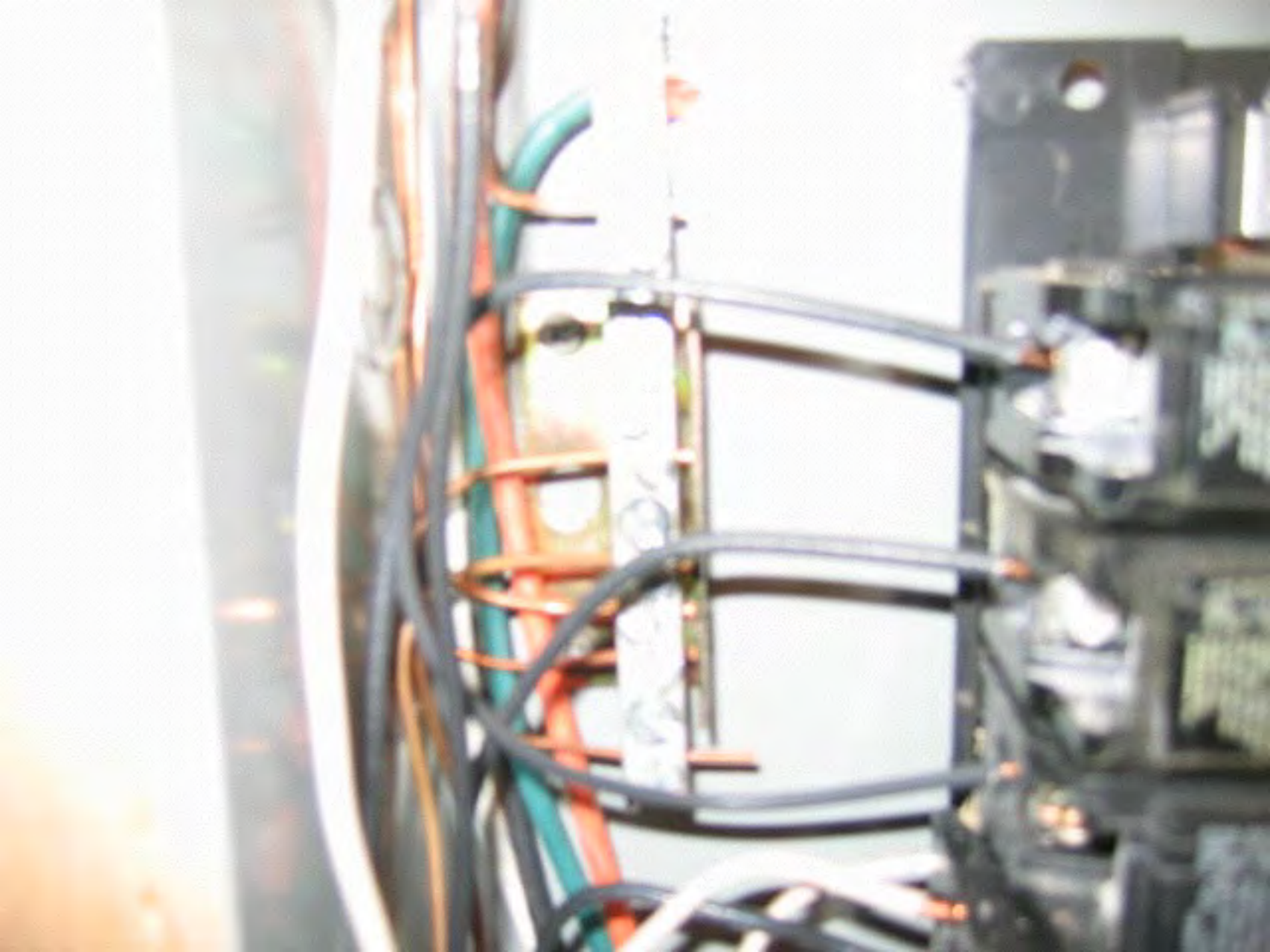
PELIGRO
DANGER

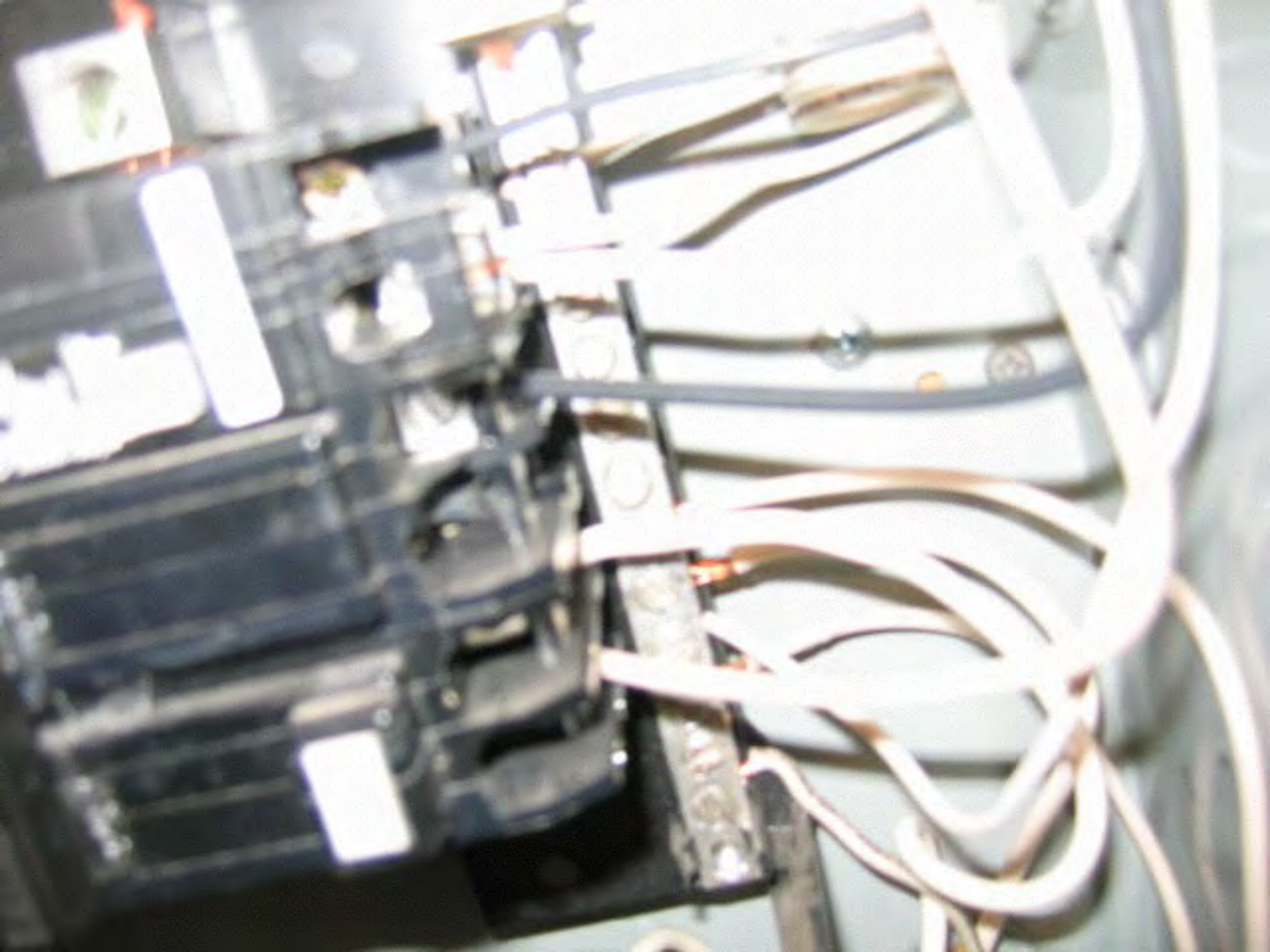
PHS TMS

POOL HOUSE LIGHT











Handwritten text on the wall, possibly a date or measurement: 3-22-00



















Gardol

PLASTIC ROOF CEMENT







Danfoss

WARNING
Read the instructions
before use.





MOTOR

EMERGENCY STOP

OFF ↓

ON ↑







CAUTION

DANGER

WARNING: This equipment is not to be used for any purpose other than that intended by the manufacturer. The use of this equipment for any other purpose is strictly prohibited. The user is responsible for the safe use of this equipment. The user must read and understand the instructions before using this equipment. The user must use this equipment in a safe and proper manner. The user must not use this equipment if it is damaged or if it is not working properly. The user must not use this equipment if it is not approved for use in the area where it is being used. The user must not use this equipment if it is not approved for use in the area where it is being used. The user must not use this equipment if it is not approved for use in the area where it is being used.

Do not attempt to touch any of the electrical components or wires. The user must use this equipment in a safe and proper manner. The user must not use this equipment if it is damaged or if it is not working properly. The user must not use this equipment if it is not approved for use in the area where it is being used. The user must not use this equipment if it is not approved for use in the area where it is being used. The user must not use this equipment if it is not approved for use in the area where it is being used.

USER'S INFORMATION MA



DUNKIRK

DUNKIRK NY 14048

BOILER MODEL NO.

XEB-5

SERIAL NO.

430100564

INSTALLATION ON NONCOMBUSTIBLE FLOORS ONLY*

INSTALLATION ON COMBUSTIBLE FLOORS ONLY WHEN
EQUIPPED ON SPECIAL BASE NUMBER 14614031

TESTED UNDER ANS-Z21.13a-1989 and CGA 4.9-1969

PRESSURE BOILERS

TECHNICAL CHARACTERISTICS/CARACTERISTIQUES ELECTRIQUE

VOLTAGES ELECTRIQUE 115 VOLTS. 60 HERTZ 1 PHASE 12 AMP MAX

DRY I**

150000 BTU/HR.
123000 BTU/HR.























Model: [Redacted]

PLUMBING
1718 BROADWAY
PO BOX 190
PLUMBING SERVICE 2A 1942
PH.

Lot Item

2 1/4" x 1/2" x 1/2" BRASS KITS
Serial # 47000000
Date Installed: 1/2000

Location

2001 Dewey Ave
Phila. PA 19101



TYPE: CIRCUITRY

NY 135 0-00

190001
190001
190001



FLEXCON
INDUSTRIES
PLUMBING & HEATING DIVISION
1000 W. 100th St., Des Moines, IA 50314
515-281-1111



ENERGYGUIDE
Important information to help you compare and choose the right water heater for your home.

106
Safety instructions and technical specifications are provided on the side of the tank.

ENERGYGUIDE
Important information to help you compare and choose the right water heater for your home.











IMPACT BOLT

y
y
re,
diment,
ing
sulation
s
aster



MODEL NO. [unreadable] SERIAL NO. [unreadable]

ENERGYGUIDE

↓

Compare the Energy Use of this Water Heater
with Others Before You Buy.

















2

2













MAIN

77 1000V 100A 1P
1000V 100A 1P
1000V 100A 1P

- 21
- 22
- 23
- 24
- 25
- 26
- 27





EXPOSURE INSTRUCTIONS
Read before use.
Keep this for future reference.
For AS Safety
Equipment

PELIGRO
DANGER

⚡

DIRECTORY	
1	21
2	22
3	23
4	24
5	25
6	26
7	27
8	28
9	29
10	30
11	31
12	32
13	33
14	34
15	35
16	36
17	37
18	38
19	39
20	40

9

10

11

12

13

14

15

16

17

18

19

20

29

30

31

32

33

34

35

36



29

30

31

32

33

15

15

20

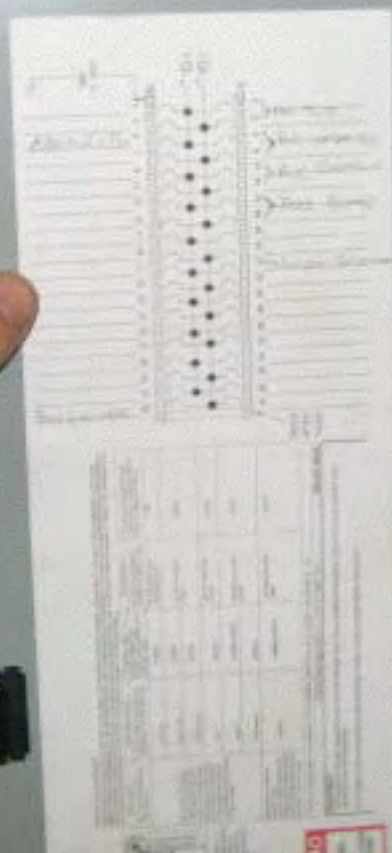
20

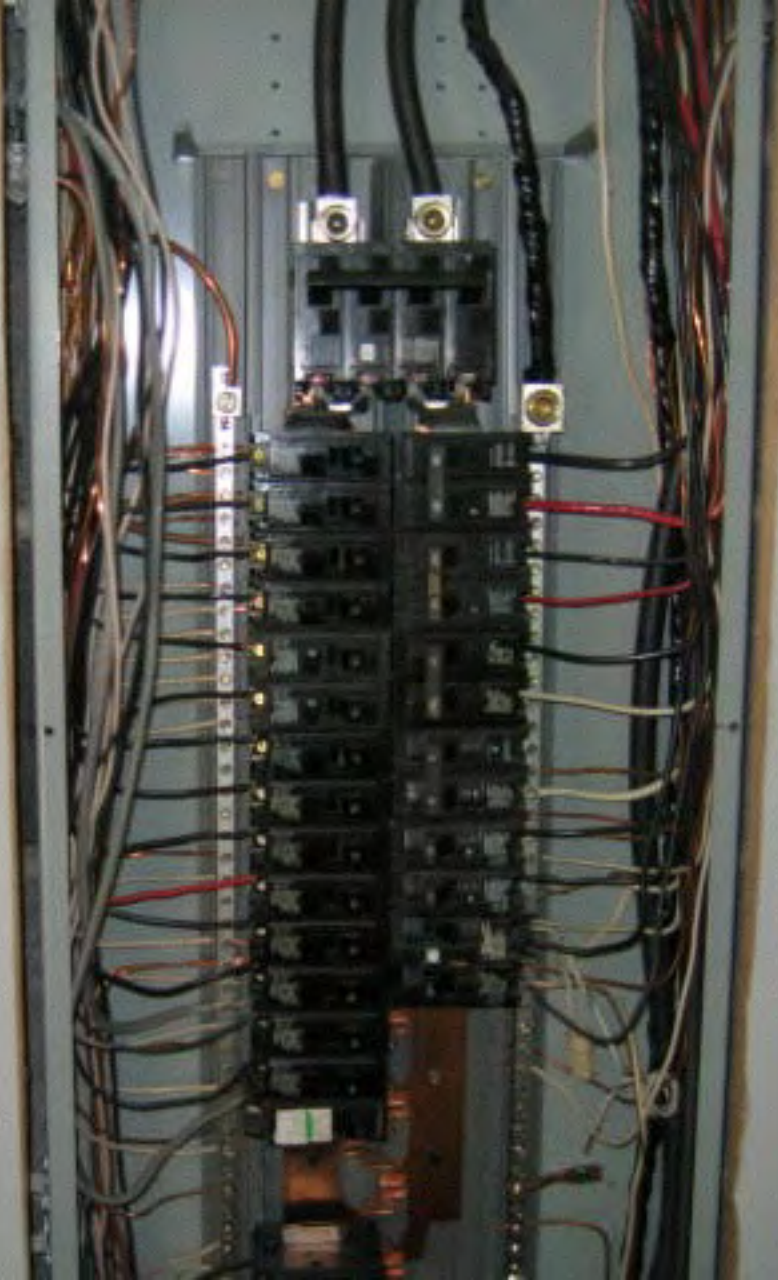
20

20

20

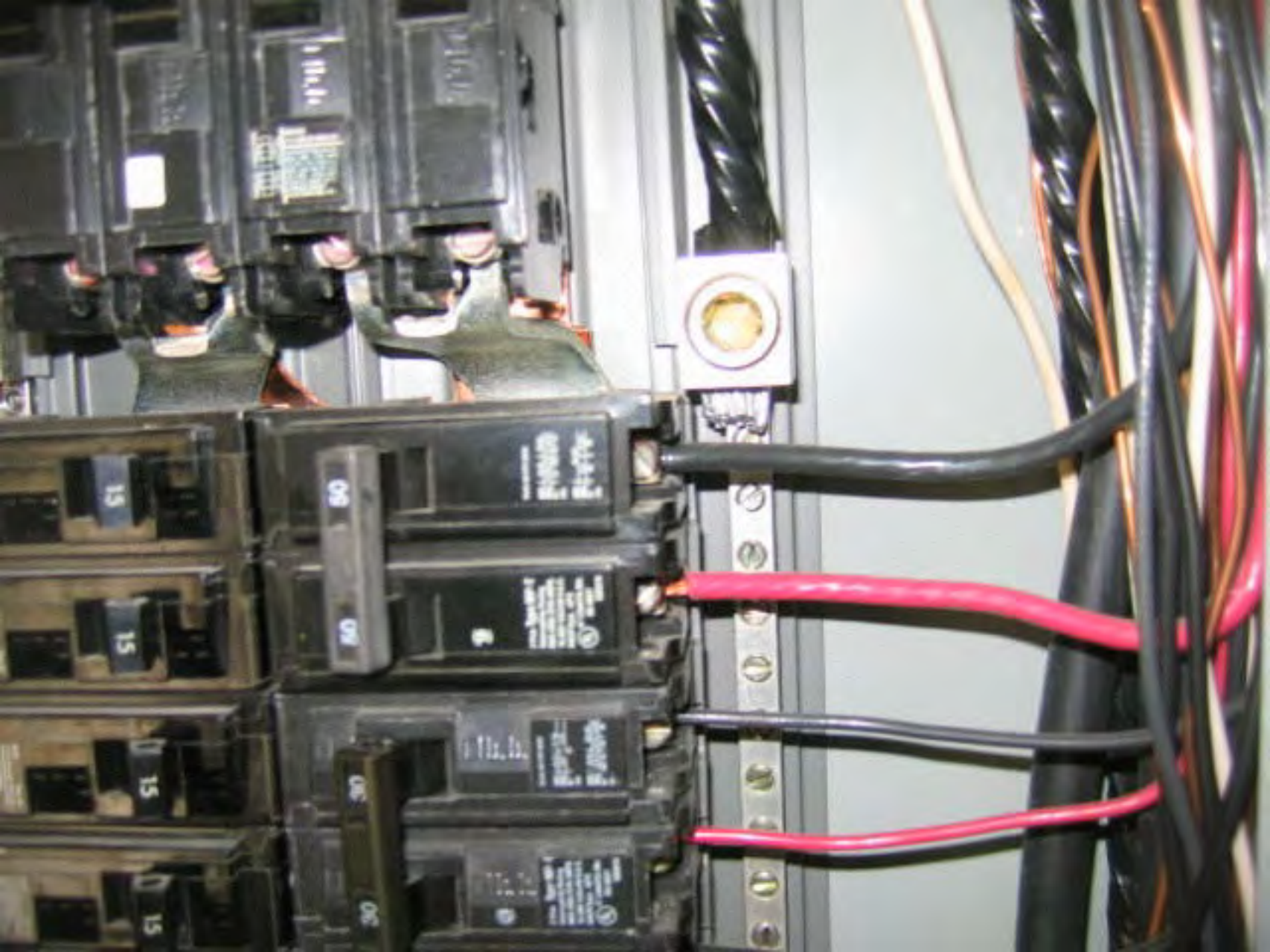
20















































































CLAM STEAMER









KEEP OFF

S

T

U

B

OFF

KID





































ATLANTA • CHICAGO
SAN FRANCISCO • LOS ANGELES
MIAMI

50

100% Pure
100% Pure







